

# British Columbia Influenza Surveillance Bulletin

Influenza Season 2017-18, Number 19, Week 12

March 18 to 24, 2018

## Table of Contents:

### British Columbia:

Sentinel Physicians	<a href="#">Page 2</a>
Children's Hospital ER	<a href="#">Page 2</a>
Medical Services Plan	<a href="#">Page 3</a>
Laboratory Surveillance	<a href="#">Page 5</a>
ILI Outbreaks	<a href="#">Page 8</a>

### Canada:

FluWatch Activity levels	<a href="#">Page 10</a>
NML Strain Characterization	<a href="#">Page 10</a>
NML Antiviral Resistance	<a href="#">Page 10</a>
Mid-season VE Estimates	<a href="#">Page 11</a>
Antiviral Guidelines	<a href="#">Page 12</a>

### International:

USA (CDC)	<a href="#">Page 13</a>
WHO	<a href="#">Page 13</a>

### Influenza Vaccine Components (WHO Recommendations)

2017-18 Northern Hemisphere	<a href="#">Page 14</a>
2018-19 Northern Hemisphere	<a href="#">Page 14</a>

### Additional Information:

Explanatory note	<a href="#">Page 15</a>
List of Acronyms	<a href="#">Page 15</a>
Web Sites	<a href="#">Page 15</a>
Outbreak Report Form	<a href="#">Page 16</a>

## Declining but Persistent Influenza Activity in BC

During week 12 (March 18 to 24, 2018), influenza activity persisted, but approached expected seasonal levels in most regions and for the province overall. These current trends follow a declining trend for the past few weeks following the epidemic peak in early-to-mid January 2018.

Influenza positivity at the BCCDC Public Health Laboratory declined to less than 30% in week 12, following a period of elevated positivity above 35% in the preceding three weeks. Influenza A and B each comprised about half of all influenza detections in week 12 with both positivity rates nearly 15%. Among influenza A detections, A(H3N2) remains the dominant subtype; however, A(H1N1)pdm09 has also been detected.

Eight lab-confirmed influenza outbreaks have been reported with onset during the most recent week 12 (ending March 24, 2018). All eight outbreak reports were from long-term care facilities (LTCFs) with five from FHA, one from IHA and two from VIHA. Of these eight outbreaks, five had influenza B detected and three had influenza A detected of which one was identified to be A(H3N2) and two were without subtype specified.

Prepared by BCCDC Influenza & Emerging Respiratory Pathogens Team

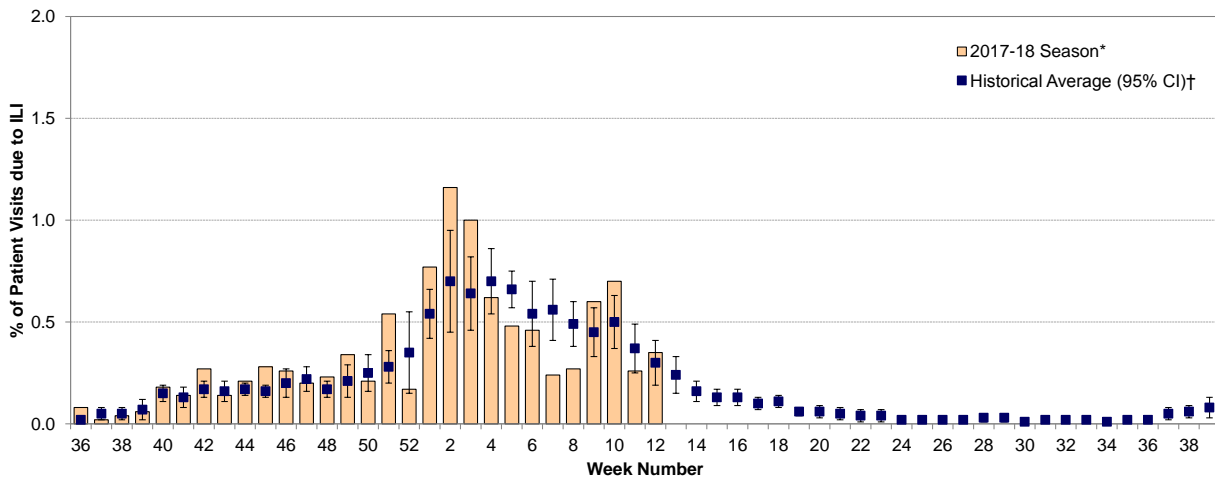
Report Disseminated: March 29, 2018

## British Columbia

### Sentinel Physicians

The proportion of patients with influenza-like illness (ILI), among those presenting to sentinel sites, was within expected levels for week 12. Rates are subject to change as reporting becomes more complete. To date, 57% of sentinel sites have reported data for week 12.

**Percent of patient visits to sentinel physicians due to influenza-like illness (ILI) compared to historical average, British Columbia, 2017-18**



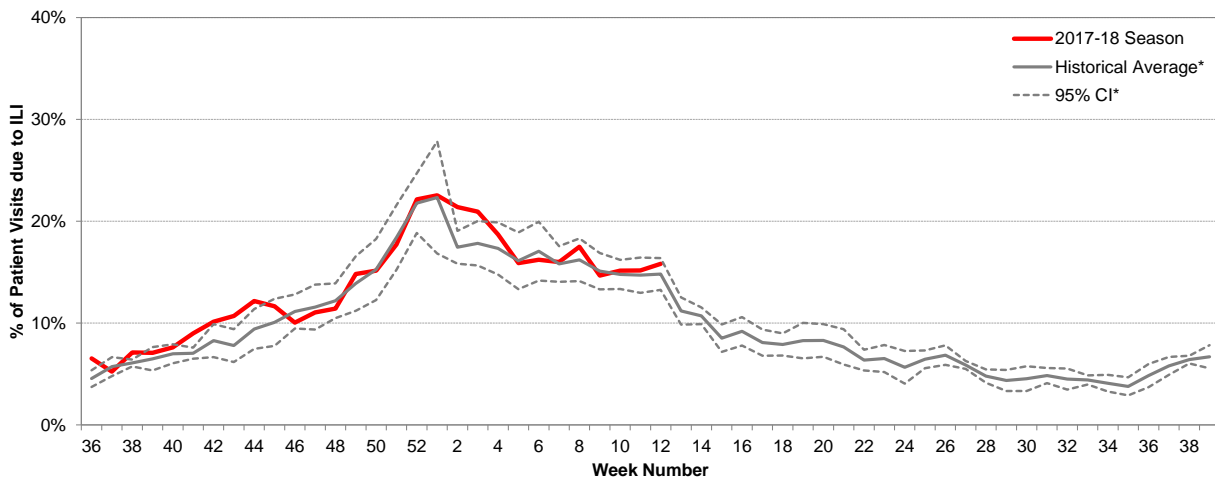
\* Data are subject to change as reporting becomes more complete.

† 10-year historical average for 2017-18 season based on 2005-06 to 2016-2017 seasons, excluding 2008-09 and 2009-10 due to atypical seasonality; CI=confidence interval.

### BC Children's Hospital Emergency Room

In week 12, the proportion of visits to BC Children's Hospital Emergency Room (ER) attributed to ILI remained within expected levels for this period.

**Percent of patients presenting to BC Children's Hospital ER attributed to influenza-like illness (ILI), British Columbia, 2017-18**



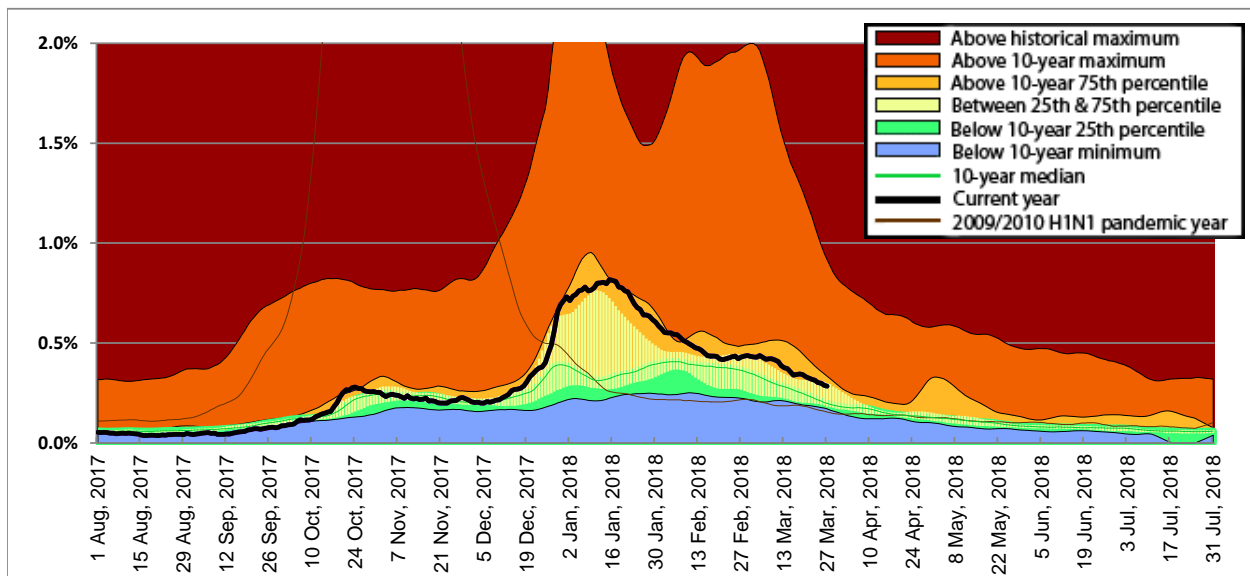
Source: BCCH Admitting, Discharge, Transfer database (ADT). Data includes records with a triage chief complaint of "flu" or "influenza" or "fever/cough."

\* 5-year historical average for 2017-18 season based on 2012-13 to 2016-17 seasons; CI=confidence interval.

### Medical Services Plan

In week 12, BC Medical Services Plan (MSP) general practitioner claims for influenza illness (II), as a proportion of all submitted MSP claims, declined slightly in the province overall and approached expected levels for this time of year. In week 12, rates for the province overall, IHA and NHA were within median levels, while rates in FHA, VCHA and VIHA were above the 10-year 75<sup>th</sup> percentile.

Service claims submitted to MSP for influenza illness (II)\* as a proportion of all submitted general practitioner service claims, British Columbia, 2017-18

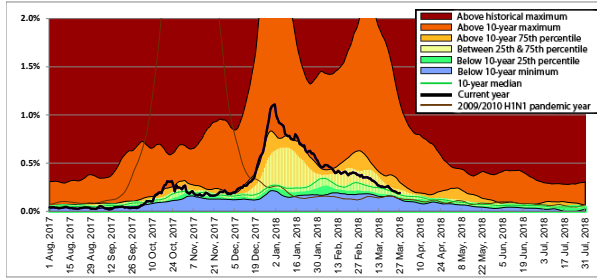


\* Influenza illness is tracked as the percentage of all submitted MSP general practitioner claims with ICD-9 code 487 (influenza).

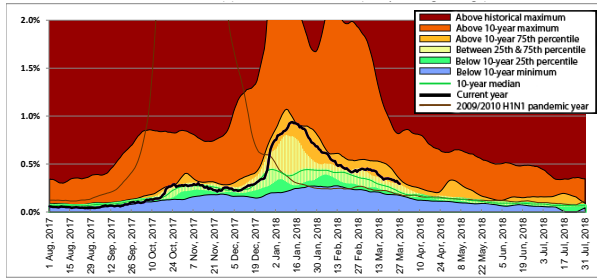
Data for the period August 1, 2009 to July 31, 2010 have been excluded from the 10-year median calculation due to atypical seasonality during the 2009/2010 H1N1 pandemic year. MSP data beginning August 1, 2017 corresponds to sentinel ILI week 31; data are current to March 27, 2018.

Data provided by Population Health Surveillance and Epidemiology, BC Ministry of Health Services.

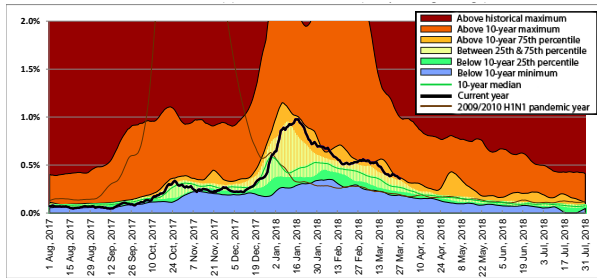
### Interior



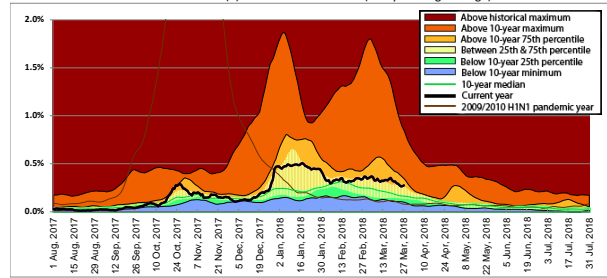
### Fraser



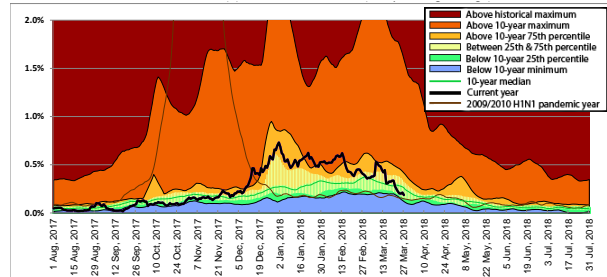
### Vancouver Coastal



### Vancouver Island



### Northern



## Laboratory Reports

### BCCDC Public Health Laboratory

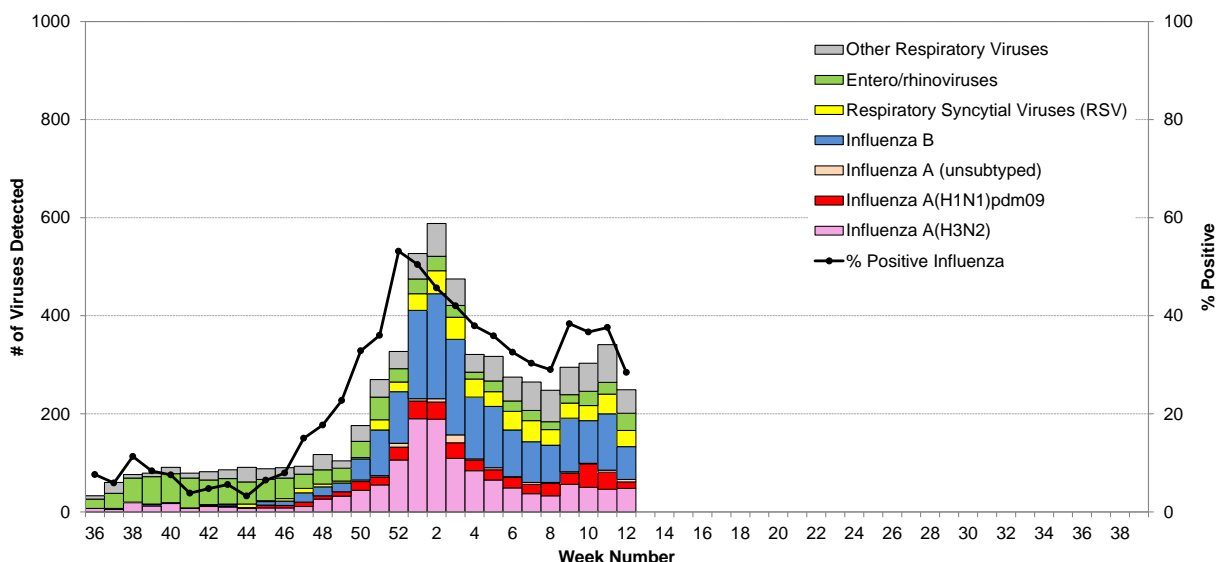
In week 12, 468 patients were tested for respiratory viruses at the BCCDC Public Health Laboratory (PHL). Of these, 133 (28%) tested positive for influenza; 66 (50%) had influenza A detected [48 A(H3N2), 13 A(H1N1)pdm09 and 5 subtype pending] and 67 (50%) had influenza B detected. Influenza positivity at the BCCDC PHL declined to 28% in week 12 following a period of elevated positivity above 35% in the preceding three weeks. Influenza A and B each comprised about half of all influenza detections in week 12 with both positivity rates nearly 15%. Based on national surveillance reports, B(Yamagata) is the predominant influenza B lineage circulating in BC and elsewhere in Canada this season. Influenza A(H3N2) remains the dominant subtype among influenza A detections; however, A(H1N1)pdm09 has also been detected.

Cumulatively during the 2017-18 season (since week 40, starting October 1, 2017), 3,538 (33%) patients tested positive for influenza at the BCCDC PHL, including 1,763 (50%) with influenza A [1,273 A(H3N2), 422 A(H1N1)pdm09, 68 subtype pending], 1,757 (50%) with influenza B and 18 patients with both influenza A [15 with A(H3N2) and three with A(H1N1)pdm09] and B detected.

More than half (60%) of A(H3N2) cases have been detected among elderly adults  $\geq 65$  years old, with 8% <20 years old, 17% 20-49 years old, and 15% 50-64 years old. Conversely, 39% of influenza B cases have been detected among elderly adults  $\geq 65$  years old, with 17% <20 years old, 24% 20-49 years old, and 20% 50-64 years old. Among A(H1N1)pdm09 cases, only 17% have been detected among elderly adults  $\geq 65$  years old, with 29% <20 years old, 37% 20-49 years old, and 16% 50-64 years old.

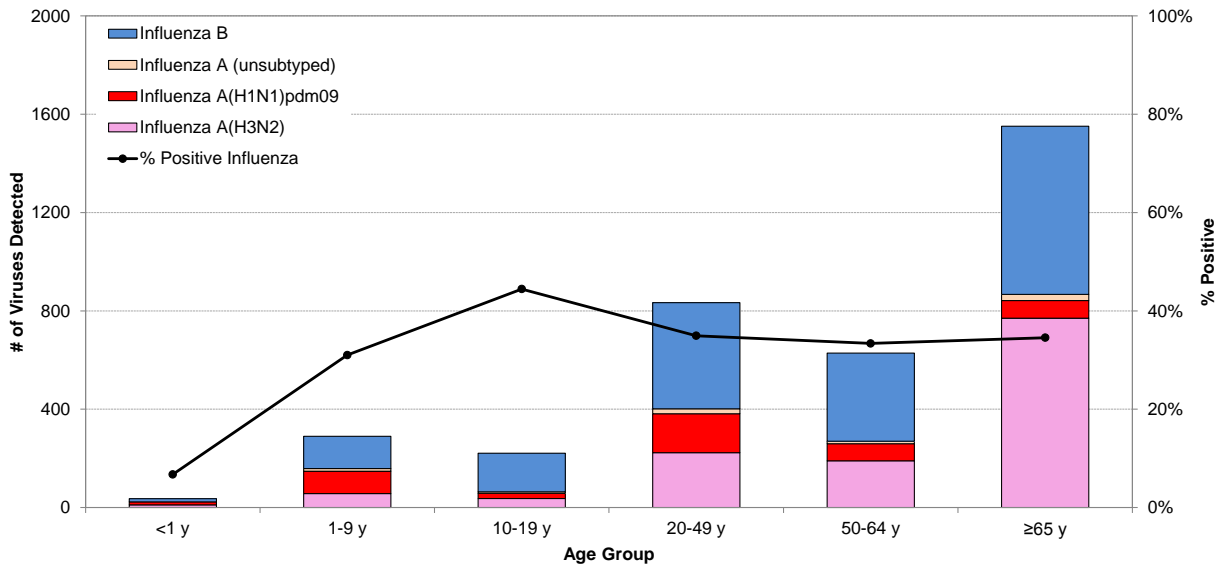
Respiratory syncytial virus (RSV) and entero/rhinoviruses were the most commonly detected non-influenza respiratory viruses during this period. RSV detections overall have been less frequent to date this season than in the 2016-17 season (518 vs. 1,457, respectively, between weeks 40 and 12).

**Influenza and other virus detections among respiratory specimens submitted to BCCDC Public Health Laboratory, 2017-18**



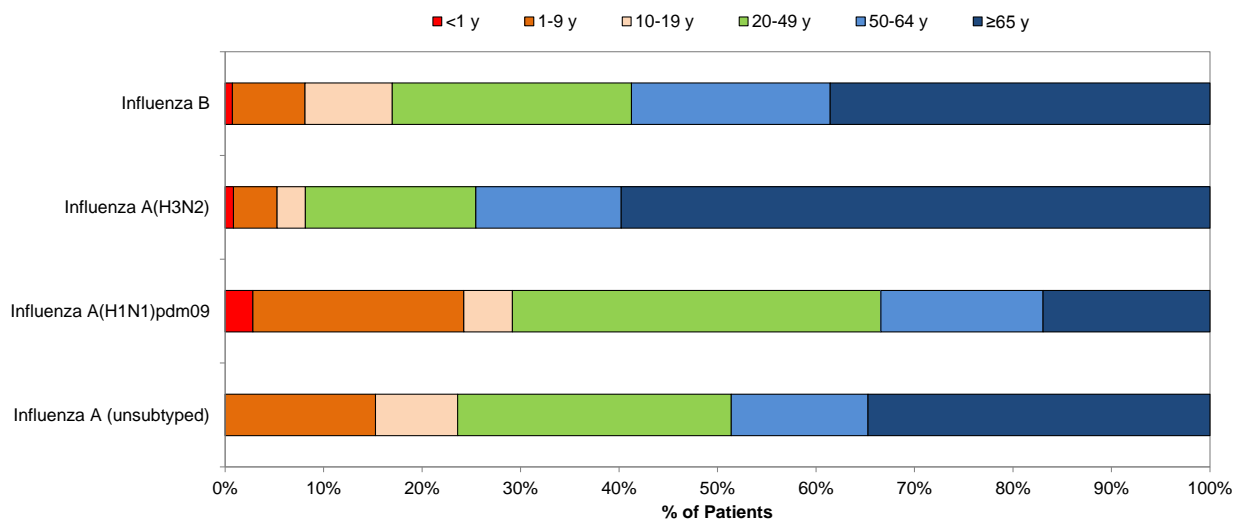
Source: BCCDC Public Health Laboratory (PHDRW); Data are current to March 28, 2018.

**Cumulative number (since week 40) of influenza detections by type subtype and age group, BCCDC Public Health Laboratory, 2017-18**



Source: BCCDC Public Health Laboratory (PHDRW); Data are current to March 28, 2018; figure includes cumulative influenza detections for specimens collected from weeks 40-12.

**Age distribution of influenza detections (cumulative since week 40), BCCDC Public Health Laboratory, 2017-18**

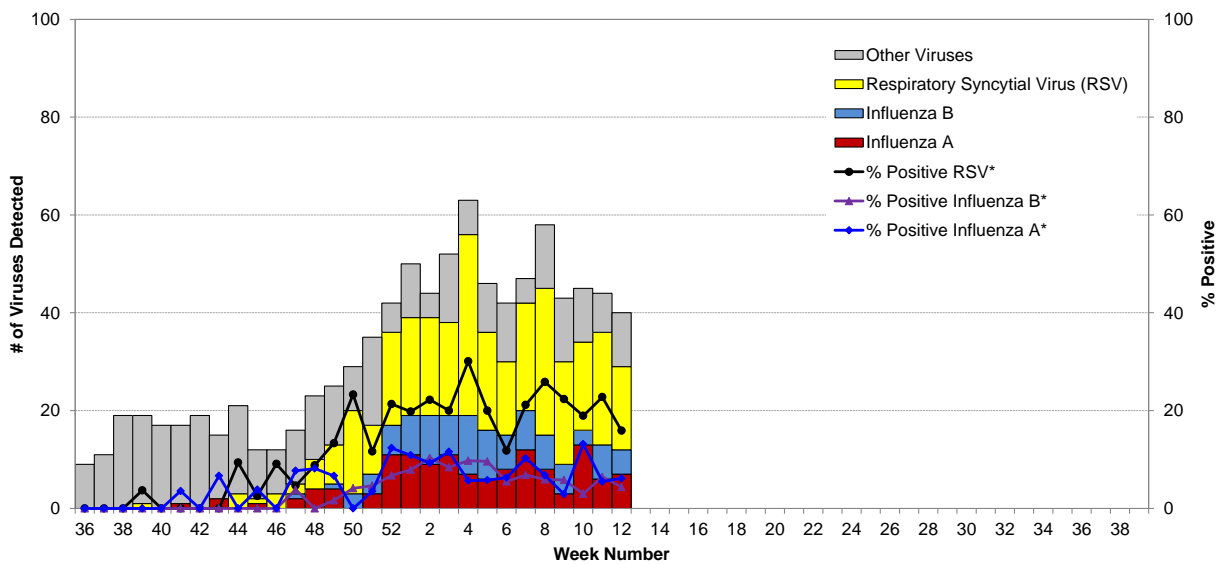


Source: BCCDC Public Health Laboratory (PHDRW); Data are current to March 28, 2018; figure includes cumulative influenza detections for specimens collected from weeks 40-12.

**BC Children's and Women's Health Centre Laboratory**

In week 12, 114 tests for influenza viruses were conducted at the BC Children's and Women's Health Centre (CWHC) laboratory. Of these, 7 (6%) were positive for influenza A and 5 (4%) were positive for influenza B. RSV was the most commonly detected respiratory virus during this period.

**Influenza and other virus detections among respiratory specimens submitted to BC Children's and Women's Health Centre Laboratory, 2017-18**



\* Positive rates were calculated using aggregate data. The denominators for each rate represent the total number of tests; multiple tests may be performed for a single specimen and/or patient.

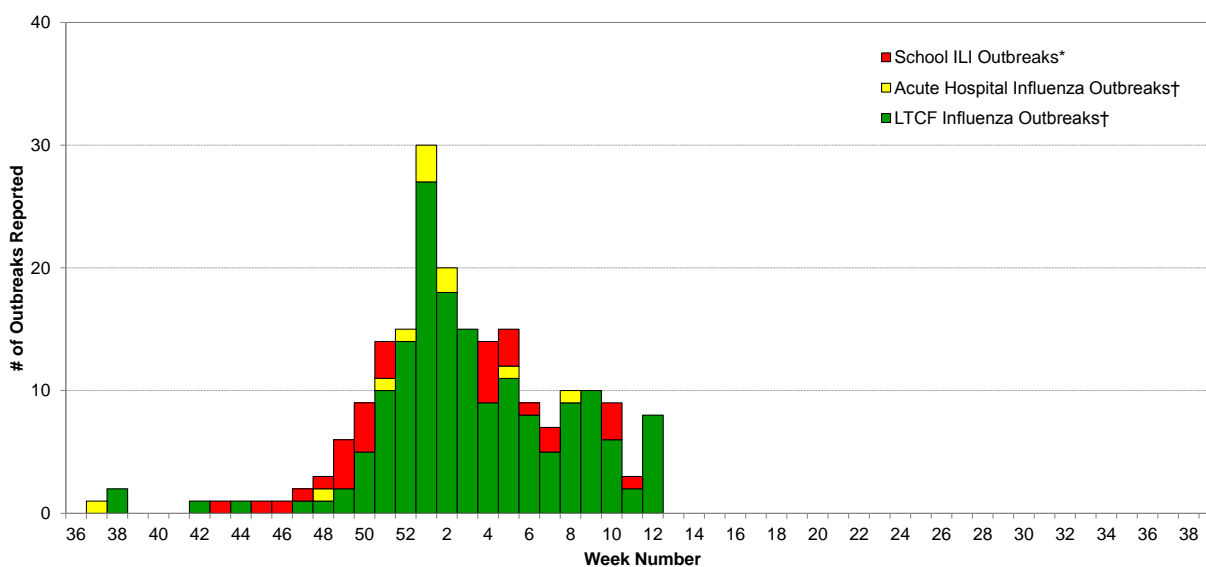
### Influenza-like Illness (ILI) Outbreaks

Eight lab-confirmed influenza outbreaks have been reported with onset during the most recent week 12 (ending March 24, 2018). All eight outbreak reports were from long-term care facilities (LTCFs) with five from FHA, one from IHA and two from VIHA. Of these eight outbreaks, five had influenza B detected and three had influenza A detected of which one was identified to be A(H3N2) and two were without subtype specified.

Cumulatively during the 2017-18 season (since week 37, starting September 10, 2017), 176 lab-confirmed influenza outbreaks have been reported, including 62 with influenza A detected [34 A(H3N2), 1 A(H1N1)pdm09 and 27 subtype unknown], 101 with influenza B, 4 with influenza A (H3N2) and influenza B, and 9 with influenza A (subtype unknown) and influenza B; of these, 165 were reported in LTCFs and 11 were reported from an acute care facility. Additionally, 31 school ILI outbreaks have occurred without etiologic agent identified.

So far during this season of mixed A(H3N2) and influenza B co-circulation, the number of long term care facility outbreaks reported since week 40 (n=163) is similar to the tally for the same period during the A(H3N2) dominant epidemic in 2014-15 (n=163), lower than the tally for the same period during the A(H3N2) dominant epidemic in 2016-17 (n=186) and higher than during recent A(H1N1)pdm09 dominant epidemics in 2013-14 (n=10) and 2015-16 (n=26), bearing in mind variation in the timing of seasonal epidemics that may influence final end-of-season comparisons. There has, however, been a greater contribution of outbreaks due to influenza B this season compared to prior recent seasons, mirroring greater influenza B contribution more generally this season, notably B(Yamagata).

**Number of influenza-like illness (ILI) outbreaks reported, British Columbia 2017-18**

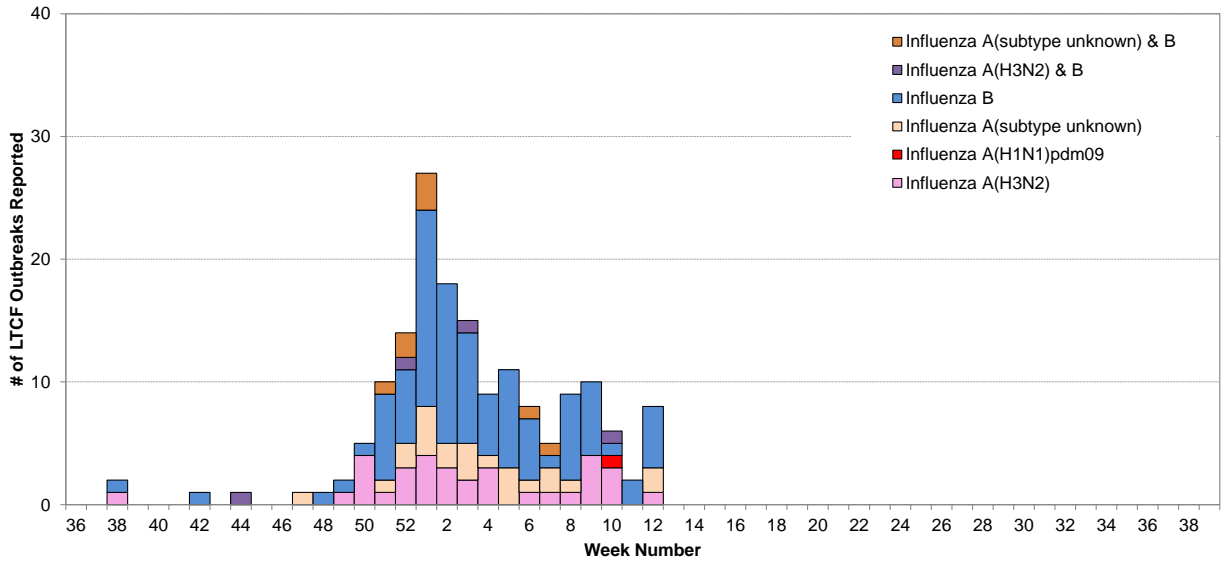


\* School-based ILI outbreak defined as >10% absenteeism on any day, most likely due to ILI.

† Facility-based influenza outbreaks defined as 2 or more ILI cases within 7-day period, with at least one laboratory-confirmed case of influenza.



**Number of influenza-like illness (ILI) outbreaks by Influenza Subtype in long-term care facilities (LTCF), British Columbia 2017-18†**



† Facility-based influenza outbreaks defined as 2 or more ILI cases within 7-day period, with at least one laboratory-confirmed case of influenza.

## National

### **FluWatch (week 12, March 18 to 24, 2018)**

Due to the shortened reporting week, not all data providers were able to report their data. The influenza season peaked in mid-February, but influenza activity remains elevated in many parts of the country. Overall, laboratory detections of influenza are steadily decreasing. To date this season, the majority of laboratory-confirmed cases, hospitalizations and deaths with influenza have been among adults 65 years of age and older. Details are available at: [www.canada.ca/en/public-health/services/diseases/flu-influenza/influenza-surveillance/weekly-influenza-reports.html](http://www.canada.ca/en/public-health/services/diseases/flu-influenza/influenza-surveillance/weekly-influenza-reports.html).

### **National Microbiology Laboratory (NML): Strain Characterization**

From September 1, 2017 to March 27, 2018, the National Microbiology Laboratory (NML) received 2,710 influenza viruses from Canadian laboratories for antigenic characterization.

**Influenza A(H3N2):** Of the 1,203 influenza A(H3N2) viruses, only 309 (26%) had sufficient haemagglutination titre for antigenic characterization by haemagglutination inhibition (HI) assay. Of the 309 viruses characterized by HI assay, 256 (83%) were considered antigenically similar to a cell culture-propagated A/Hong Kong/4801/2014-like virus, the WHO-recommended A(H3N2) component for the 2017-18 northern hemisphere influenza vaccine, while 53 (17%) viruses (all belonging to genetic clade 3C.3a) showed reduced titre with ferret antisera raised against cell culture-propagated A/Hong Kong/4801/2014. Of the 285 out of 309 viruses that were antigenically characterized with available sequencing information, 210 belonged to genetic clade 3C.2a, 22 belonged to subclade 3C.2a1 and 53 belonged to clade 3C.3a; sequencing is pending for the 24 remaining isolates. Of the 894 viruses genetically characterized, 799 (89%) were reported to belong to genetic clade 3C.2a, which includes the A/Hong Kong/4801/2014 vaccine strain, while 93 (10%) belonged to subclade 3C.2a1 and 2 belonged to clade 3C.3a.

**Influenza A(H1N1)pdm09:** All of the 182 A(H1N1)pdm09 viruses characterized were antigenically similar to an A/Michigan/45/2015-like virus, the WHO-recommended influenza A(H1N1) component for the 2017-18 northern hemisphere influenza vaccine.

**Influenza B:** Of the 1,325 influenza B viruses characterized, 56 (4%) belonged to the B(Victoria) lineage and 1,269 (96%) belonged to the B(Yamagata) lineage. Among the 56 B(Victoria) viruses, 14 (25%) were characterized as antigenically similar to a B/Brisbane/60/2008(Victoria)-like virus, the WHO-recommended influenza B component for the 2017-18 northern hemisphere trivalent influenza vaccine, while 42 (75%) viruses showed reduced titre with ferret antisera produced against cell-propagated B/Brisbane/60/2008. Sequence analysis showed that 37 viruses that showed reduced titre had a two-amino acid deletion in the hemagglutinin (HA) gene; sequence is pending for the remaining 5 isolates. Among the 1,269 B(Yamagata) viruses, all were antigenically similar to a B/Phuket/3073/2013(Yamagata lineage)-like virus, the WHO-recommended influenza B component for the 2017-18 northern hemisphere quadrivalent influenza vaccine containing two influenza B strains.

### **National Microbiology Laboratory (NML): Antiviral Resistance**

From September 1, 2017 to March 27, 2018, the NML received influenza viruses from Canadian laboratories for drug susceptibility testing.

**Amantadine:** Of the 1,376 influenza A viruses [1,215 A(H3N2) and 161 A(H1N1)pdm09] tested against amantadine, all were resistant except eight A(H3N2) viruses which were sensitive.

**Oseltamivir:** Of the 1,041 influenza viruses [463 A(H3N2), 131 A(H1N1)pdm09, and 447 B] tested against oseltamivir, all were sensitive except one A(H1N1)pdm09 virus with a H275Y mutation which was resistant.

**Zanamivir:** Of the 1,037 influenza viruses [459 A(H3N2), 131 A(H1N1)pdm09, and 447 B] tested against zanamivir, all were sensitive except one B virus which was resistant.

## Mid-season 2017-18 Vaccine Effectiveness Estimates

### Canada

On February 1, 2018, Canadian researchers published the first estimates of mid-season influenza vaccine effectiveness (VE) for the 2017-18 season. Adjusted VE against A(H3N2) was low at 17% (95%CI: -14 to 40%). Higher adjusted VE was observed for influenza B at 55% (95%CI: 38 to 68%), despite prominent use of lineage-mismatched B(Victoria) trivalent vaccine in most regions. The full report is available as an open-access publication from *EuroSurveillance*:

<http://www.eurosurveillance.org/content/10.2807/1560-7917.ES.2018.23.5.18-00035>

### United States

On February 15, 2018, the US CDC published interim estimates of influenza vaccine effectiveness (VE) for the 2017-18 season. Adjusted VE against A(H3N2) was 25% (95% CI: 13 to 36%), comparable to Canadian estimates with both suggesting low protection against the dominant circulating strain. Adjusted VE against influenza B was 42% (95% CI: 25 to 56%), somewhat lower than previous Canadian findings despite the more prominent use of quadrivalent vaccines. The full report is available from *Morbidity and Mortality Weekly Report (MMWR)*:

[https://www.cdc.gov/mmwr/volumes/67/wr/mm6706a2.htm?s\\_cid=mm6706a2\\_e](https://www.cdc.gov/mmwr/volumes/67/wr/mm6706a2.htm?s_cid=mm6706a2_e)

### Spain (Navarre)

On February 15, 2018, Spanish researchers published interim estimates of influenza vaccine effectiveness (VE) for the 2017-18 season. The adjusted VE against influenza B, predominantly B(Yamagata), was 52% (95% CI: 12 to 74%) in the outpatient setting. This finding suggests moderate, cross-lineage protection against influenza B. The full report is available from *Eurosurveillance*:

<https://www.eurosurveillance.org/content/10.2807/1560-7917.ES.2018.23.7.18-00057>

### Hong Kong

On February 22, 2018, Hong Kong researchers published interim estimates of influenza vaccine effectiveness (VE) among hospitalized children for the 2017-18 season. The 2017-18 season in Hong Kong has been characterized by influenza B(Yamagata) activity. VE among children aged 6 months to 17 years of age was 65% (95% CI: 40 to 80) for influenza B. Differences in study design, patient populations and other epidemiological factors, as well as the use of predominantly quadrivalent influenza vaccine, which includes the B(Yamagata) lineage virus, should be taken into account in comparing these findings to other studies. The full report is available from *Eurosurveillance*:

<https://www.eurosurveillance.org/content/10.2807/1560-7917.ES.2018.23.8.18-00062>

### Europe (I-MOVE Group)

On March 1, 2018, European researchers from the I-MOVE multicentre case-control study published interim estimates of influenza vaccine effectiveness (VE) for the 2017-18 season. The 2017-18 season in I-MOVE countries has been characterised by predominant circulation of influenza B, with a greater proportion of A(H1N1)pdm09 than A(H3N2) among influenza A detections.

Adjusted VE against A(H3N2) was -16% (95% CI: -96 to 31) for all ages suggesting no protection, and consistent with Canadian findings of low VE. Despite predominant use of trivalent influenza vaccine containing lineage-mismatched influenza B(Victoria) antigen, adjusted VE against influenza B, that was predominantly B(Yamagata), was 39% (95% CI: 19 to 54) for all ages and 49% (95% CI: 19 to 67) when restricted to mismatched B(Yamagata) specimens. This finding suggests moderate, cross-lineage protection against influenza B, which has been observed previously for influenza B and is also consistent with Canadian findings. The full report is available from *Eurosurveillance*:

<https://www.eurosurveillance.org/content/10.2807/1560-7917.ES.2018.23.9.18-00086>

### **Updated Antiviral Guidelines**

The Association of Medical Microbiology and Infectious Disease Canada (AMMI Canada) previously released guidance on the use of antiviral drugs in anticipation of the low vaccine effectiveness for the 2017-18 influenza season. These guidelines are available at: <https://www.ammi.ca/Update/79.ENG.pdf>.

## International

### **USA (week 11, March 11 to 17, 2018)**

During week 11, influenza activity decreased in the United States (US). Overall, influenza A(H3N2) viruses have predominated this season in the US. However, in recent weeks the proportion of influenza A viruses has declined, and during week 11, influenza B viruses were more frequently reported than influenza A viruses. The percentage of respiratory specimens testing positive for influenza in clinical laboratories decreased. The proportion of deaths attributed to pneumonia and influenza (P&I) was above the system-specific epidemic threshold in the National Center for Health Statistics (NCHS) Mortality Surveillance System. Five influenza-associated pediatric deaths were reported, bringing the cumulative seasonal tally of pediatric deaths to date to 133. A cumulative rate of 93.5 laboratory-confirmed influenza-associated hospitalizations per 100,000 population was reported. The proportion of outpatient visits for influenza-like illness (ILI) was 2.7%, which is above the national baseline of 2.2%. The geographic spread of influenza in 17 states was reported as widespread; Guam, Puerto Rico and 26 states reported regional activity; the District of Columbia and five states reported local activity; and the U.S. Virgin Islands and two states reported sporadic activity. Details are available at: [www.cdc.gov/flu/weekly/](http://www.cdc.gov/flu/weekly/).

### **WHO**

There have been no WHO influenza updates since our last bulletin. Previous updates are available at: [www.who.int/influenza/surveillance\\_monitoring/updates/en/](http://www.who.int/influenza/surveillance_monitoring/updates/en/).

## **WHO Recommendations for Influenza Vaccines**

### **WHO Recommendations for 2017-18 Northern Hemisphere Influenza Vaccine**

On March 2, 2017, the WHO announced the recommended strain components for the 2017-18 northern hemisphere influenza vaccine:\*

- an A/Michigan/45/2015 (H1N1)pdm09-like virus;†
- an A/Hong Kong/4801/2014 (H3N2)-like virus;
- a B/Brisbane/60/2008 (Victoria-lineage)-like virus;
- a B/Phuket/3073/2013 (Yamagata-lineage)-like virus (quadrivalent vaccines only).

\* These recommended strains are the same as those recommended for the 2017 southern hemisphere vaccine and represent a change for one of the four components used for the 2016-17 northern hemisphere vaccine.

† Recommended strain represents a change from an A/California/7/2009-like virus, which had been retained as the A(H1N1)pdm09 component since the 2009 pandemic, to an A/Michigan/45/2015-like virus belonging to the phylogenetic subclade 6B.1.

For further details: [www.who.int/influenza/vaccines/virus/recommendations/2017\\_18\\_north/en/](http://www.who.int/influenza/vaccines/virus/recommendations/2017_18_north/en/).

### **WHO Recommendations for the 2018-19 Northern Hemisphere Influenza Vaccine**

On February 22, 2018, the WHO announced recommended strain components for the 2018-19 northern hemisphere influenza vaccine:\*

- an A/Michigan/45/2015 (H1N1)pdm09-like virus;†
- an A/Singapore/INFIMH-16-0019/2016 (H3N2)-like virus;‡
- a B/Colorado/06/2017-like (Victoria-lineage)virus.§
- a B/Phuket/3073/2013-like (Yamagata-lineage)virus (quadrivalent vaccines only).§

\* Recommended strains represent a change for two of the four components used for the 2017-18 northern hemisphere vaccines. Recommended strains are similar to the 2018 southern hemisphere vaccine with the exception of the B/Colorado/06/2017-like virus which replaces the B/Brisbane/60/2008-like virus as the B(Victoria-lineage) virus component.

† Recommended strain is the same as recommended for the 2017-18 northern hemisphere and 2018 southern hemisphere vaccines. The A/Michigan/45/2015-like virus belongs to the phylogenetic subclade 6B.1.

‡ Recommended strain for the A(H3N2) component represents a phylogenetic clade-level change from a clade 3C.2a virus to a clade 3C.2a1 virus.

§ Recommended strain for the influenza B component represents a change for the B(Victoria)-lineage component compared to the 2017-18 northern hemisphere and 2018 southern hemisphere vaccines from a B/Brisbane/60/2008-like virus, which had been retained since the 2009-10 season, to a B/Colorado/06/2017-like virus, belonging to the clade 1A antigenic drift variant with a two-amino acid deletion at positions 162-163. The B(Yamagata)-lineage component, B/Phuket/3073/2013-like virus, recommended for quadrivalent vaccine remains unchanged from the 2017-18 northern hemisphere vaccine.

For further details: [http://www.who.int/influenza/vaccines/virus/recommendations/2018\\_19\\_north/en/](http://www.who.int/influenza/vaccines/virus/recommendations/2018_19_north/en/).

## Additional Information

### **Explanatory Note:**

The surveillance period for the 2017-18 influenza season is defined starting in week 40. Weeks 36-39 of the 2016-17 season are shown on graphs for comparison purposes.

### **List of Acronyms:**

**ACF:** Acute Care Facility

**AI:** Avian influenza

**FHA:** Fraser Health Authority

**HBoV:** Human bocavirus

**HMPV:** Human metapneumovirus

**HSDA:** Health Service Delivery Area

**IHA:** Interior Health Authority

**ILI:** Influenza-Like Illness

**LTCF:** Long-Term Care Facility

**MSP:** BC Medical Services Plan

**NHA:** Northern Health Authority

**NML:** National Microbiological Laboratory

**A(H1N1)pdm09:** Pandemic H1N1 influenza (2009)

**RSV:** Respiratory syncytial virus

**VCHA:** Vancouver Coastal Health Authority

**VIHA:** Vancouver Island Health Authority

**WHO:** World Health Organization

### **Current AMMI Canada Guidelines on the Use of Antiviral Drugs for Influenza:**

[www.ammi.ca/Update/79.ENG.pdf](http://www.ammi.ca/Update/79.ENG.pdf)

### **Web Sites:**

BCCDC Emerging Respiratory Pathogen Updates:

<http://www.bccdc.ca/health-professionals/data-reports/communicable-diseases/emerging-respiratory-virus-updates>

### **Influenza Web Sites**

Canada – Influenza surveillance (FluWatch): <https://www.canada.ca/en/public-health/services/diseases/flu-influenza/influenza-surveillance.html>

Washington State Flu Updates: <http://www.doh.wa.gov/portals/1/documents/5100/420-100-fluupdate.pdf>

USA Weekly Surveillance Reports: [www.cdc.gov/flu/weekly/](http://www.cdc.gov/flu/weekly/)

Joint ECDC – WHO/Europe weekly influenza update (Flu News Europe): [flunewseurope.org](http://flunewseurope.org)

WHO – Weekly Epidemiological Record: [www.who.int/wer/en/](http://www.who.int/wer/en/)

WHO Collaborating Centre for Reference and Research on Influenza (Australia):

[www.influenzacentre.org/](http://www.influenzacentre.org/)

Australian Influenza Report:

[www.health.gov.au/internet/main/publishing.nsf/content/cda-surveil-ozflu-flucurr.htm](http://www.health.gov.au/internet/main/publishing.nsf/content/cda-surveil-ozflu-flucurr.htm)

New Zealand Influenza Surveillance Reports: [www.surv.esr.cri.nz/virology/influenza\\_weekly\\_update.php](http://www.surv.esr.cri.nz/virology/influenza_weekly_update.php)

### **Avian Influenza Web Sites**

WHO – Influenza at the Human-Animal Interface: [www.who.int/csr/disease/avian\\_influenza/en/](http://www.who.int/csr/disease/avian_influenza/en/)

World Organization for Animal Health: [www.oie.int/eng/en\\_index.htm](http://www.oie.int/eng/en_index.htm)

### **Contact Us:**

Tel: (604) 707-2510

Fax: (604) 707-2516

Email: [InfluenzaFieldEpi@bccdc.ca](mailto:InfluenzaFieldEpi@bccdc.ca)

Communicable Disease Prevention and Control Services (CDPACS)

BC Centre for Disease Control

655 West 12<sup>th</sup> Ave, Vancouver BC V5Z 4R4

Online: <http://www.bccdc.ca/health-professionals/data-reports/communicable-diseases/influenza-surveillance-reports>

# Influenza-Like Illness (ILI) Outbreak Summary Report Form

Please complete and email to [ilioutbreak@bccdc.ca](mailto:ilioutbreak@bccdc.ca)

**Note: This form is for provincial surveillance purposes.**

**Please notify your local health unit per local guidelines/requirements.**

**ILI:** Acute onset of respiratory illness with fever and cough and with one or more of the following: sore throat, arthralgia, myalgia, or prostration which *could* be due to influenza virus. In children under 5, gastrointestinal symptoms may also be present. In patients under 5 or 65 and older, fever may not be prominent.

**Schools and work site outbreak:** greater than 10% absenteeism on any day, most likely due to ILI.

**Residential institutions (facilities) outbreak:** two or more cases of ILI within a seven-day period.

A	<b><u>Reporting Information</u></b> <span style="float: right;">Health unit/medical health officer notified? <input type="checkbox"/> Yes <input type="checkbox"/> No</span>
	Person Reporting: _____ Title: _____
	Contact Phone: _____ Email: _____
	Health Authority: _____ HSDA: _____
	Full Facility Name: _____
	Is this report: <input type="checkbox"/> First Notification ( <i>complete section B below; Section D if available</i> ) <input type="checkbox"/> Update ( <i>complete section C below; Section D if available</i> ) <input type="checkbox"/> Outbreak Over ( <i>complete section C below; Section D if available</i> )

B	<b><u>First Notification</u></b>														
	Type of facility: <input type="checkbox"/> LTCF <input type="checkbox"/> Acute Care Hospital <input type="checkbox"/> Senior's Residence <i>(if ward or wing, please specify name/number: _____)</i> <input type="checkbox"/> Workplace <input type="checkbox"/> School (grades: _____) <input type="checkbox"/> Other (_____ )														
	Date of onset of first case of ILI (dd/mm/yyyy): <u>DD / MMM / YYYY</u>														
	<table border="1" style="width: 100%; border-collapse: collapse;"> <thead> <tr> <th style="width: 25%;">Numbers to date</th> <th style="width: 50%;">Residents/Students</th> <th style="width: 25%;">Staff</th> </tr> </thead> <tbody> <tr> <td><b>Total</b></td> <td></td> <td></td> </tr> <tr> <td><b>With ILI</b></td> <td></td> <td></td> </tr> <tr> <td><b>Hospitalized</b></td> <td></td> <td></td> </tr> <tr> <td><b>Died</b></td> <td></td> <td></td> </tr> </tbody> </table>	Numbers to date	Residents/Students	Staff	<b>Total</b>			<b>With ILI</b>			<b>Hospitalized</b>			<b>Died</b>	
Numbers to date	Residents/Students	Staff													
<b>Total</b>															
<b>With ILI</b>															
<b>Hospitalized</b>															
<b>Died</b>															

C	<b><u>Update AND Outbreak Declared Over</u></b>														
	Date of onset for most recent case of ILI (dd/mm/yyyy): <u>DD / MMM / YYYY</u>														
	If over, date outbreak declared over (dd/mm/yyyy): <u>DD / MMM / YYYY</u>														
	<table border="1" style="width: 100%; border-collapse: collapse;"> <thead> <tr> <th style="width: 25%;">Numbers to date</th> <th style="width: 50%;">Residents/Students</th> <th style="width: 25%;">Staff</th> </tr> </thead> <tbody> <tr> <td><b>Total</b></td> <td></td> <td></td> </tr> <tr> <td><b>With ILI</b></td> <td></td> <td></td> </tr> <tr> <td><b>Hospitalized</b></td> <td></td> <td></td> </tr> <tr> <td><b>Died</b></td> <td></td> <td></td> </tr> </tbody> </table>	Numbers to date	Residents/Students	Staff	<b>Total</b>			<b>With ILI</b>			<b>Hospitalized</b>			<b>Died</b>	
Numbers to date	Residents/Students	Staff													
<b>Total</b>															
<b>With ILI</b>															
<b>Hospitalized</b>															
<b>Died</b>															

D	<b><u>Laboratory Information</u></b>
	Specimen(s) submitted? <input type="checkbox"/> Yes (location: _____) <input type="checkbox"/> No <input type="checkbox"/> Don't know If yes, organism identified? <input type="checkbox"/> Yes (specify: _____) <input type="checkbox"/> No <input type="checkbox"/> Don't know